

Pioneers In Pouch Packaging Machines & Spare Parts



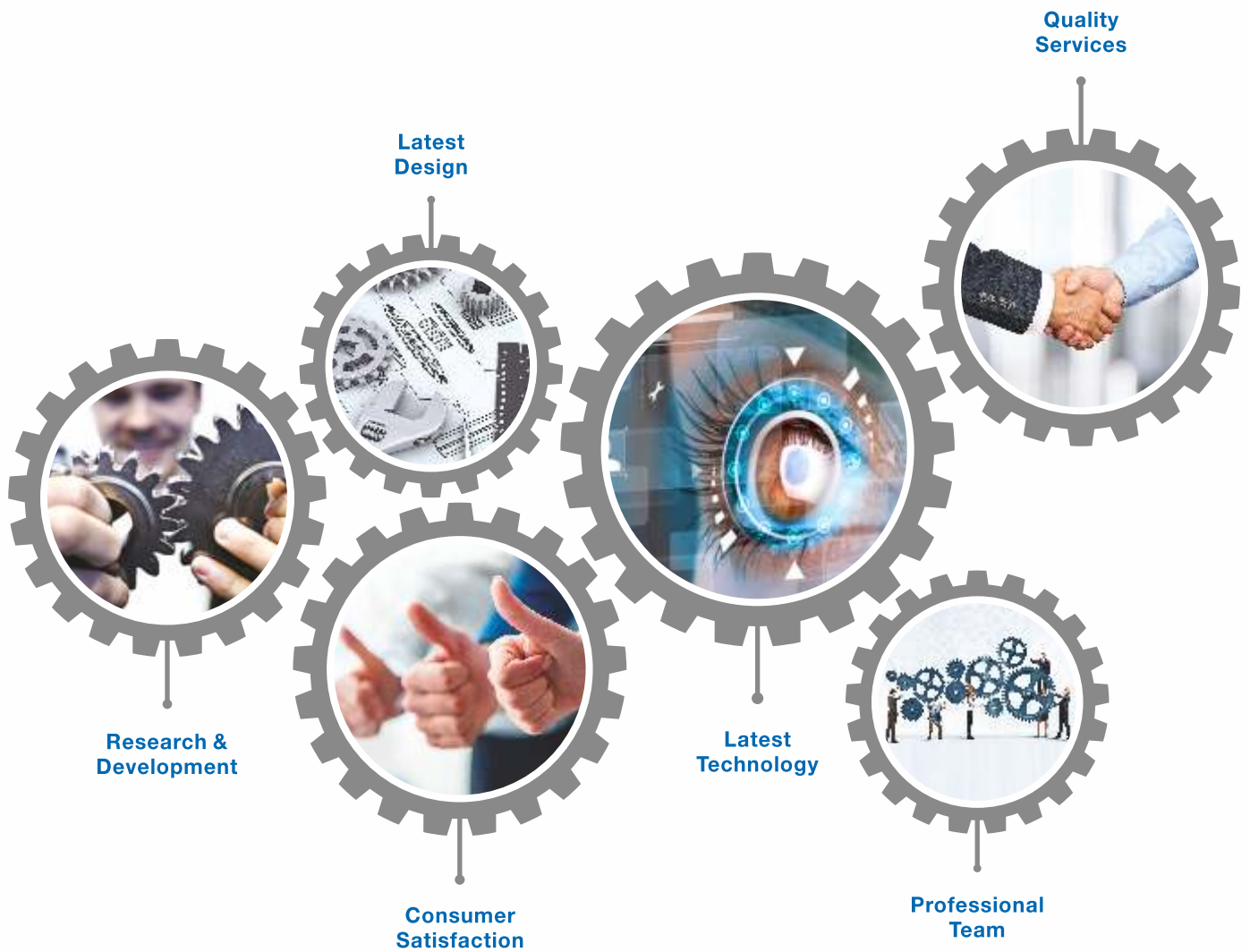
STRENGTH

QUALITY

DURABILITY

PERFORMANCE

MAINTENANCE



Vision :

To deliver the best quality and trusted leading edge technology through automation & become the most reliable and trusted pouch packaging machines manufacturer in the industry.

Mission :

To deliver the best quality and trusted leading edge technology through automation & become the most reliable and trusted pouch packaging machines manufacturer in the industry.

Specialist in :

Best quality pouch packaging machines & spare parts.

Director's message:

Raj Engineers is a pioneer pouch packaging machinery manufacturer of India, innovated advance technologies to improve product quality and market appeal. We assure you the excellent product pouch packaging and prompt after sales service for each and every product.

STRENGTH

 QUALITY

DURABILITY

PERFORMANCE

MAINTENANCE





About Company :

With over 20 year of experience in design, development, manufacturing and installing Raj Engineers has evolved as a most trusted brand for all your pouch packaging needs. **Mr. Rajesh Panchariya** has established Raj Engineers in year 1995 with an aim to deliver the best quality pouch packaging machines to the manufacturing industry.

Our history is full of firsts and our machines are installed in a range of industries like FMCG, Cosmetics, Food and Beverages, Healthcare, Tobacco and many more over the country. With successful operations and unparallel experience our machines incorporate the expertise and high tech capacities with international standards and regulations.

Encouraged from our clients and market response our machineries are modern and automated in tune with the market requirement. We are renowned in the whole industry for manufacturing a machine with top notch quality and offer "High Speed Production" ranging from 100 pouch per minute to 500 pouch per minute in FFS & upto 3500 & plus in Rotary for most of the products. Raj Engineers had developed several innovation solutions for variety of products includes Cosmetics, Chemicals, Soap & Detergents, Oils, Chocolates, Snacks, Spices etc. you name the product we have a machine for you. Be it a liquid, solid, semi liquid, semi solid and nitrogen we have pouch packaging solution all your products.

USP :

The only integrated pouch packaging machine manufacturing company with capabilities of research and innovation to create top notch quality high speed production machine.

To achieve better performance every machine is designed, implemented and experimented under real environmental conditions before delivery. Each part is made with the uppermost quality of metal to give high strength and quality. Machines are fully automated, portable and easy to move.

AIM :

To retain our more than 20 years old customers with the same trust and to expand new customer base even more with brand loyalty and efficiency.

STRENGTH

 **QUALITY** MANUFACTURING / INSTALLATION / SPARE PARTS

DURABILITY

PERFORMANCE

MAINTENANCE





Manufacturing

At its most basic level, manufacturing quality is conformance to specifications which provides the fundamental to manage operations to manufacture finest quality products.

Quality means setting standards and meeting them, in Raj Engineers we ensure to manufacture machines with the highest possible quality and standard using modern technology. Testing and inspection of each machine before delivery is carried out vigorously is our area of expertise.

Three Side FFS

FFS



High Speed FFS



Technical Data

Model no.	: RE-FFS-TS-099
Sealing Type	: 3 Side (T/S)
Item To Pack	: Powder / Granules / Solid Piece Item
Material Quantity	: 0.5 - 25 Grams
Filling Type	: Volumetric Cup Filler
Speed	: 35 - 120 Pouches / min (Grammage Dependent)
Packing Lamination	: Heat Sealable Laminate
Power	
• Motor	: 0.25 HP / 0.50 HP
• Supply	: 230 V (Single Phase)
• Heating Load	: 2 KW
Accuracy	: ± 1 %
Dimension	: 750 x 550 x 2300 mm
Weight	: 250 Kg Approx
Main Body Frame	: M.S., Casting, S.S.

Technical Data

Model no.	: RE-FFS-TS-100
Sealing Type	: 3 Side (T/S)
Item To Pack	: Granules
Material Quantity	: 0.3 - 10 Grams
Filling Type	: Volumetric Cup Filler
Speed	: 150 - 500 Pouches / min (Grammage Dependent)
Packing Lamination	: Heat Sealable Laminate
Power	
• Motor	: VFD with 1 HP (Single / 3 Phase)
• Supply	: 230 V (Single Phase)
• Heating Load	: 2 KW
Accuracy	: ± 1 %
Dimension	: 850 x 550 x 2300 mm
Weight	: 350 Kg Approx
Main Body Frame	: M.S., Casting, S.S.

Four Side Seal

FFS



4 Side Seal

Center Seal

FFS



Center Seal

Technical Data

Model no.	: RE-FFS-FS-094
Sealing Type	: 4 Side (F/S)
Item To Pack	: Powder / Granules
Material Quantity	: 0.3 - 10 Grams
Filling Type	: Volumetric Cup Filler
Speed	: 150 - 500 Pouches / min (Grammage Dependent)
Packing Lamination	: Heat Sealable Laminate
Power	
• Motor	: 0.25 HP / 0.50 HP
• Supply	: 230 V (Single Phase)
• Heating Load	: 2 KW
Accuracy	: ± 1 %
Dimension	: 750 x 550 x 2300 mm
Weight	: 350 Kg Approx
Main Body Frame	: M.S., Casting, S.S.

Technical Data

Model no.	: RE-FFS-CS-092
Sealing Type	: Center Seal (C/S)
Item To Pack	: Powder / Granules / Solid Piece Item
Material Quantity	: 10 - 1000 Grams
Filling Type	: Volumetric Cup Filler
Speed	: 25 - 60 Pouches / min (Grammage Dependent)
Packing Lamination	: Heat Sealable Laminate
Power	
• Motor	: 0.25 HP / 0.50 HP
• Supply	: 230 V (Single Phase)
• Heating Load	: 2 KW
Accuracy	: ± 1 %
Dimension	: 750 x 550 x 2300 mm
Weight	: 300 Kg Approx
Main Body Frame	: M.S., Casting, S.S.

Screw Loading System

Available for All Machines



Technical Data

Model no.	: RE-P-SL-200
Sealing Type	: Center Seal (C/S)
Item To Pack	: Powder / Fine Powder/ Granules
Material Quantity	: 100 - 1000 Grams
Loading System	: Screw
Filling Type	: Auger / Cup Filler
Speed	: 30 - 90 Pouches / min
Packing Lamination	: Heat Sealable Laminate
Optional	: Nitrogen Filing
Power	
• Load	: 2.5 KW/HR 230 V Single / 3 Phase
Accuracy	: ± 1 %
Dimension	: 3000 x 3000 x 3200 mm
Weight	: 750 Kg Approx
Main Body Frame	: M.S., Casting, S.S.



Center Seal

Three Side / Four Side / Center Seal

Pneumatic System



Pneumatic Collar Type



Technical Data

Model no.	: RE-P-TS/FS/CS-200
Sealing Type	: 3 Side (T/S) / 4 Side (F/S) / Center Seal (C/S)
Item To Pack	: Fine Powder / Powder / Granules / Liquid
Material Quantity	: 10 - 2000 Grams
Filling Type	: Auger / Cup Filler
Speed	: 15 - 90 Pouches / min
Packing Lamination	: Heat Sealable Laminate
Optional	: Nitrogen Filing
Power	
• Load	: 2.5 KW/HR 1HP Single / 3 Phase
Accuracy	: ± 1 %
Dimension	: 1000 x 1000 x 3000 mm
Weight	: 650 Kg Approx
Main Body Frame	: M.S., Casting, S.S.

Technical Data

Model no.	: RE-P-TS/FS/CS-201
Type	: COLLAR TYPE
Sealing Type	: 3 Side (T/S) / 4 Side (F/S) / Center Seal (C/S)
Item To Pack	: Fine Powder / Powder / Granules / Liquid
Material Quantity	: 10 - 2000 Grams
Filling Type	: Auger
Speed	: 15 - 90 Pouches / min
Packing Lamination	: Heat Sealable Laminate
Optional	: Nitrogen Filing
Power	
• Load	: 2.5 KW/HR 1HP Single / 3 Phase
Accuracy	: ± 1 %
Dimension	: 1000 x 1000 x 3000 mm
Weight	: 650 Kg Approx
Main Body Frame	: M.S., Casting, S.S.

FFS Liquid / Paste

Separate Tank Type



3 / 4 Side Seal

Hopper Type



3 / 4 Side Seal

Technical Data

Model no.	: RE-FFS-LQ-101
Sealing Type	: 3 Side (T/S) 4 Side (F/S)
Item To Pack	: Liquid / Paste
Material Quantity	: 0.5 - 250 ml
Filling Type	: Volumetric Pump Filler
Speed	: 30 - 35 Pouches / min
Packing Lamination	: Heat Sealable Laminate

Power

- Motor : 0.25 HP / 0.50 HP
- Supply : 230 V
(Single Phase)

• Heating Load	: 2 KW
Accuracy	: ± 1 %
Dimension	: 950 x 550 x 1800 mm
Weight	: 350 Kg Approx
Main Body Frame	: M.S., Casting, S.S.

Technical Data

Model no.	: RE-FFS-LQ-102
Sealing Type	: 3 Side (T/S) 4 Side (F/S)
Item To Pack	: Liquid / Paste
Material Quantity	: 0.5 - 250 ml
Filling Type	: Volumetric Pump Filler
Speed	: 30 - 35 Pouches / min
Packing Lamination	: Heat Sealable Laminate

Power

- Motor : 0.25 HP / 0.50 HP
- Supply : 230 V
(Single Phase)

• Heating Load	: 2 KW
Accuracy	: ± 1 %
Dimension	: 950 x 550 x 1800 mm
Weight	: 350 Kg Approx
Main Body Frame	: M.S., Casting, S.S.

Multi Weigher

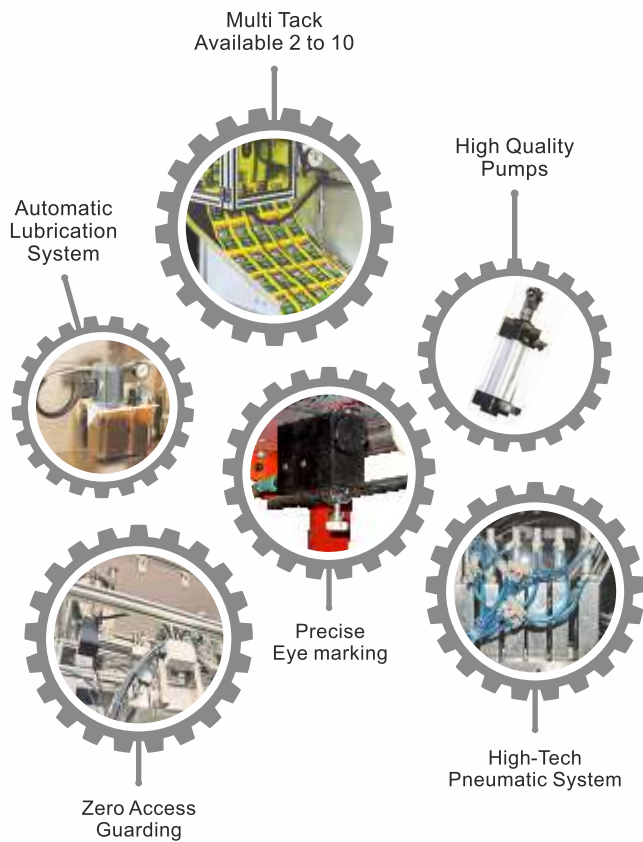


Technical Data

Model no.	: RE-MH-700
Sealing Type	: Center Seal (C/S)
Item To Pack	: Chips, Snacks, Pasta, Fryums, Etc
Material Quantity	: 10 - 100 Grams
Filling Type	: Weigh Filler (Multi Head)
Speed	: 50 - 60 Pouches / Min
Optional	: Nitrogen Filling
Power	
• Load	: 2.5 KW/HR 440 V Single Phase / Three Phase
Accuracy	: ± 1 %
Dimension	: 2100 X 2000 X 3000 mm
Weight	: 1800 Kg Approx
Main Body Frame	: M.S., Casting, S.S.



Multi Track Machine



Technical Data

Model no.	: RE-MT-700
Sealing Type	: 4 Side (F/S)
Item To Pack	: Liquid / Powder / Fine Powder/ Granules / Oil / Paste
Material Quantity	: 3 - 20 ml Liquid 3 - 20 Grams Powder
Filling Type	: Rotary / Pump Filling
Speed	: 70 (Per Track) - 700 Pouches / Min
Packing Lamination	: Heat Sealable Laminate
Power	
• Load	: 7.5 KW Three Phase
Accuracy	: ± 1 %
Dimension	: 1500 x 1500 x 3000 mm
Weight	: 1100 Kg Approx
Main Body Frame	: M.S., Casting, S.S.



3 / 4 Side Seal

Candy Machine



Technical Data

Model no.	: RE-CM-100
Sealing Type	: Center Seal (C/S)
Item To Pack	: Small Candy Type
Filling Type	: Cup Filler
Speed	: 700 Pouches / min
Packing Lamination	: Heat Sealable Laminate

Power

- Motor : 1 HP With AC Drive / Available
- Voltage : 220 V / 440 V
- Phase : 1 Phase / 3 Phase
- Load : 3 KW

Accuracy	: ± 1 %
Dimension	: 1080 x 1000 x 1360 mm
Weight	: 700 Kg Approx
Main Body Frame	: M.S., Casting, S.S.

Flow Wrap Machine



Technical Data

Model no.	: RE-FW-100
Sealing Type	: Center Seal (C/S)
Item To Pack	: Biscuits, Soaps, etc
Filling Type	: Conveyer System
Speed	: 50 -100 Pouches / min
Packing Lamination	: Heat Sealable Laminate

Power

- Motor : 1 HP With AC Drive / Available
- Voltage : 220 V / 440 V
- Phase : 1 Phase / 3 Phase
- Load : 2 KW

Accuracy	: ± 1 %
Dimension	: 3000 x 1700 x 1800 mm
Weight	: 700 Kg Approx
Main Body Frame	: M.S., Casting, S.S.

Band Sealer

Horizontal Sealer



Technical Data

Model no.	: RE-BS-H-100
Sealing Type	: Top Seal
Item To Pack	: Any Item
Material Quantity	: 1 - 10 Kg
Speed	: Continuous
Heating Load	: 150 V
Heaters	: As Per Requirement
Packing Lamination	: Heat Sealable Laminate
Filling Type	: Nitrogen (Optional)
Accuracy	: ± 1 %
Dimension	: 2000 X 1500 X 1200 mm
Weight	: 350 Kg Approx
Main Body Frame	: M.S., Casting, S.S.



Band Sealer

Vertical Sealer

Model no. : RE-BS-V-100



Vertical Band Sealer with Nitrogen

Model no. : RE-BS-V-N-100



STRENGTH

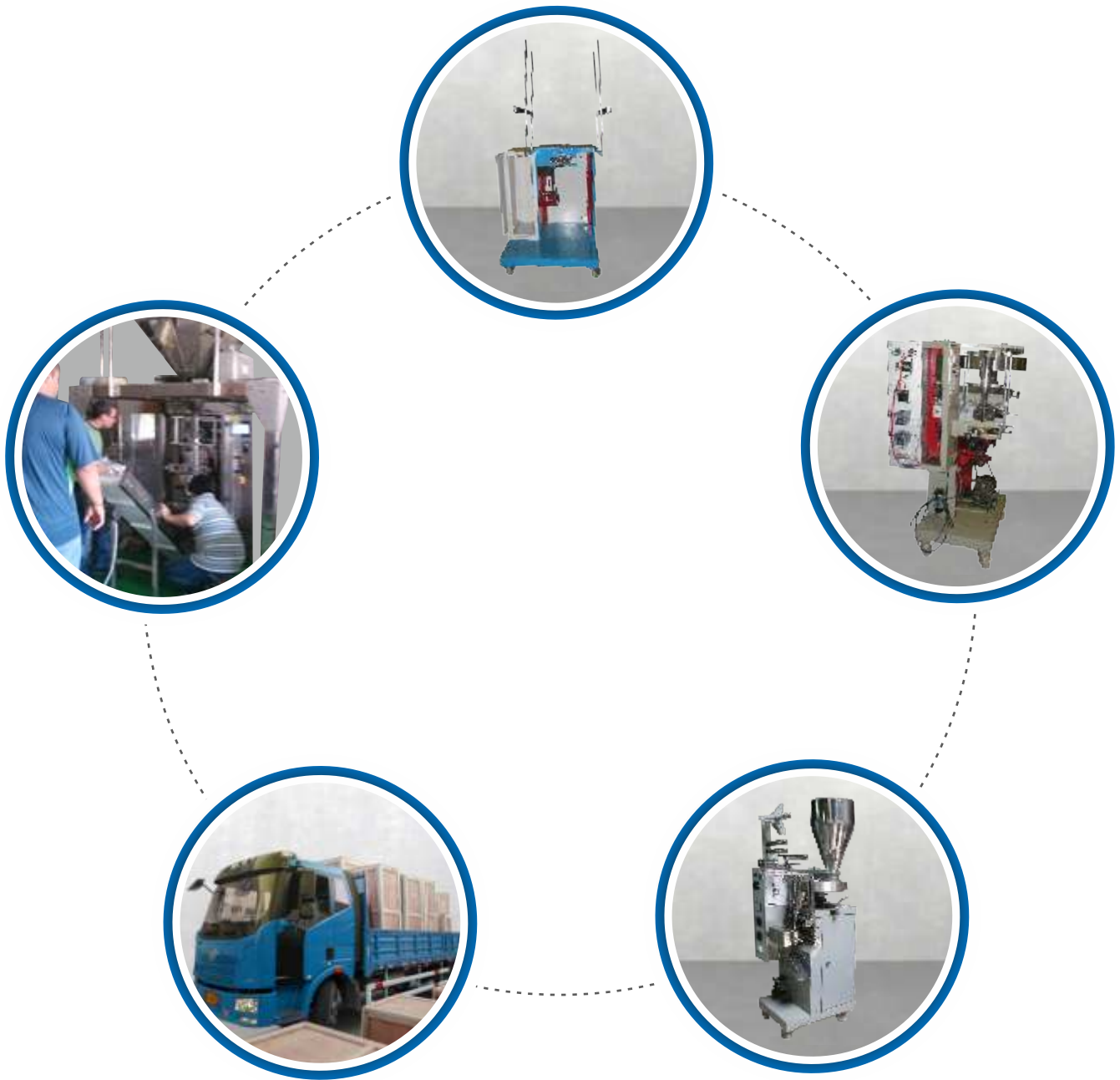
 **QUALITY** MANUFACTURING / **INSTALLATION** / SPARE PARTS

DURABILITY

PERFORMANCE

MAINTENANCE





Installation

When you buy new pouch packaging machine you want it to be installed accurately at first time. Due to the varying desires and requirements of each machine install, our professional team will work with your installation technician to plan an onsite inspection. Using this information our team will make sure your pouch packaging machine is installed & calibrated according to your precise requirements.

STRENGTH

 **QUALITY** MANUFACTURING / INSTALLATION / SPARE PARTS

DURABILITY

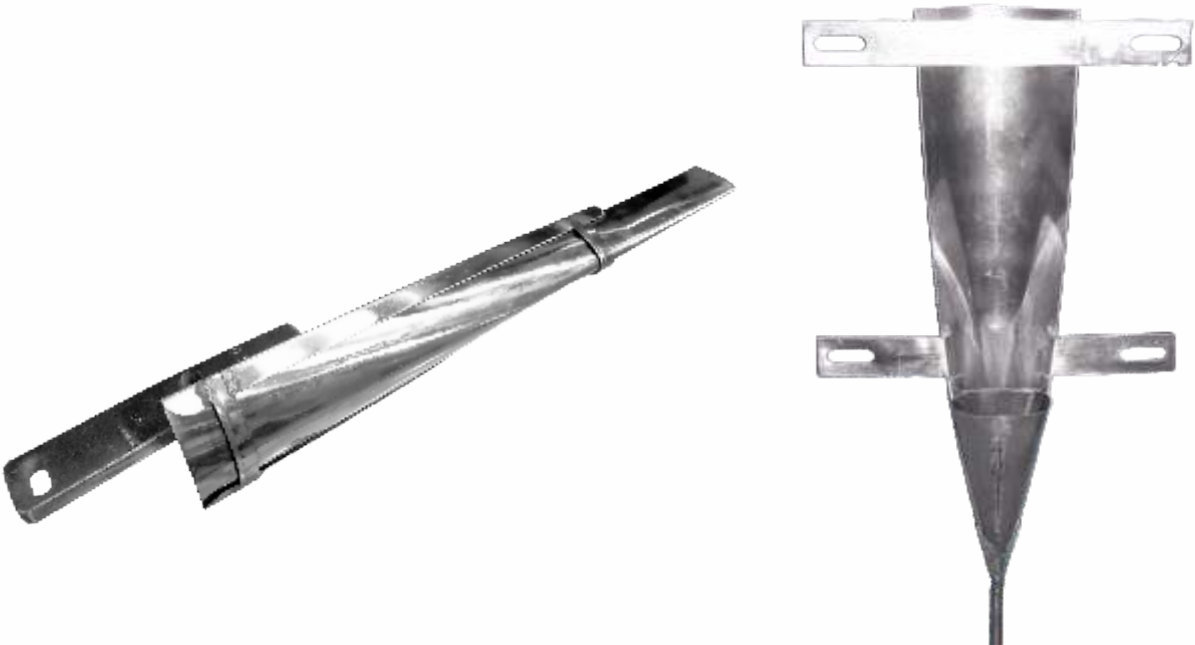
PERFORMANCE

MAINTENANCE

Mechanical Parts



Suit



Mechanical Parts



Sealers



Wheel



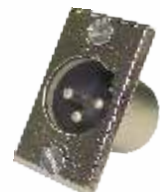
Pneumatic Parts



Electrical Parts



Electrical Parts



STRENGTH

QUALITY

 DURABILITY

PERFORMANCE

MAINTENANCE



Why Choose Us



Durability

Our well qualified expert demeanor a series of quality tests of the machinery based on international quality norms. Moreover, our packaging machineries and spare parts are available in: **Mild Steel (MS), Stainless Steel (SS), Aluminium, Titanium, Gun Metal and Carbon Fiber.**

Why our machines are more durable:

- ⚙️ **Best quality raw material is used for manufacturing**
- ⚙️ **Monitoring and changing wear parts regularly**
- ⚙️ **Ensuring high wear parts are held in reserve**
- ⚙️ **Highly Lubricant machinery**
- ⚙️ **Examination of the product at various stages of assembly and when it is finished.**

Keeping your requirements and demands into account, we ensure to deliver fit for purpose machinery according to customer expectations in nowadays world.

STRENGTH

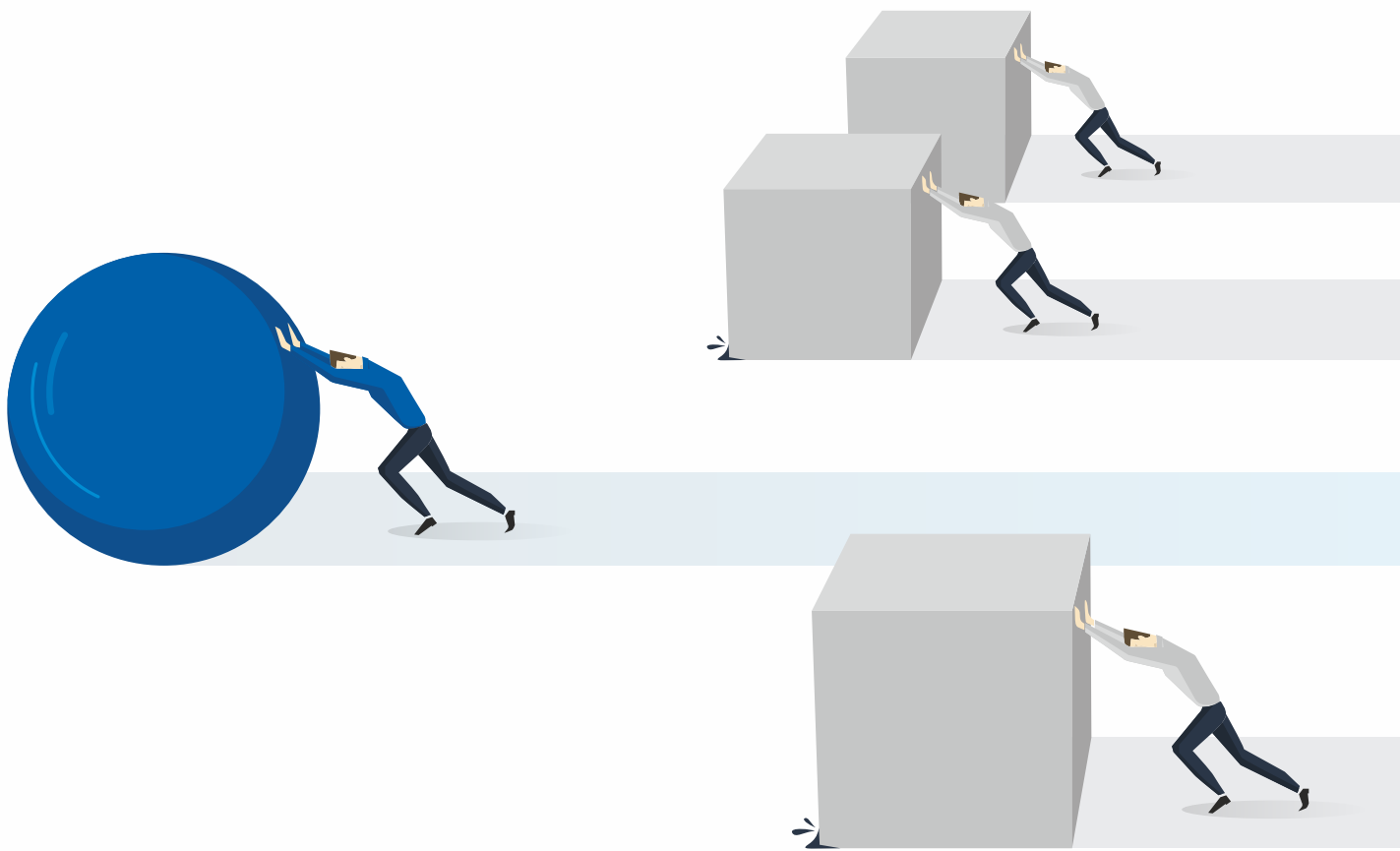
QUALITY

DURABILITY

 PERFORMANCE

MAINTENANCE



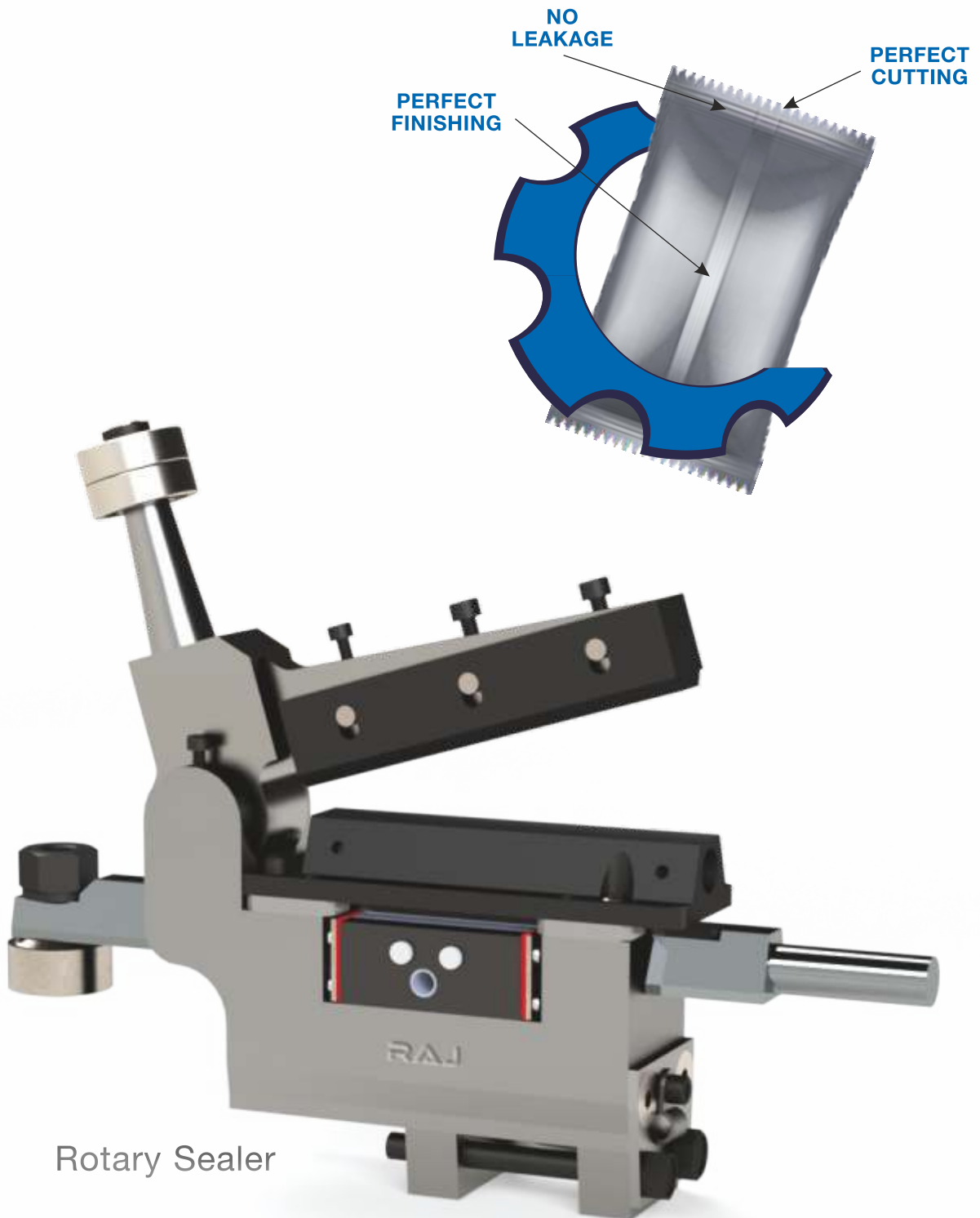


Performance

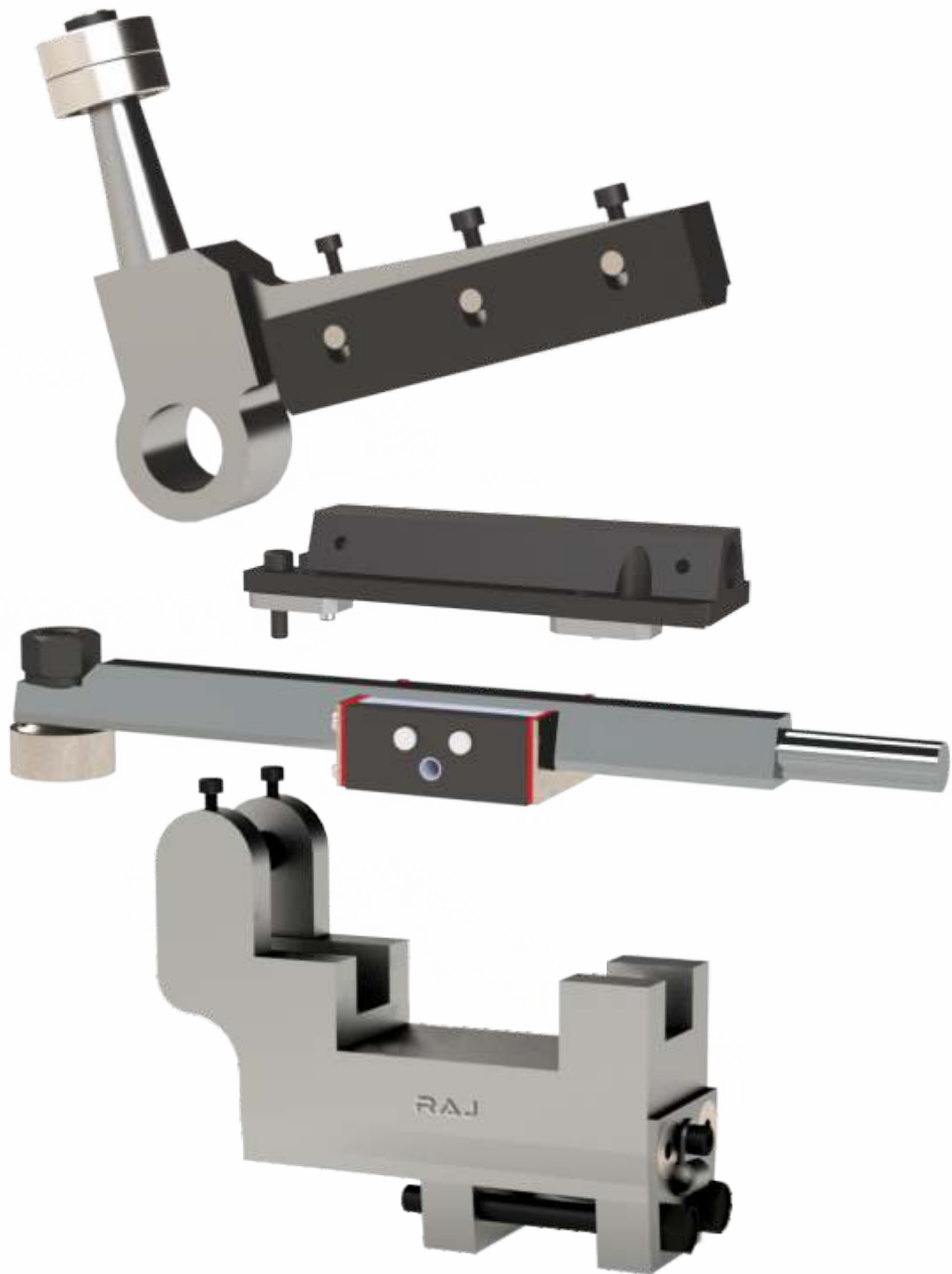
In the world of pouch packaging machinery performance and flexibility is our goal. While designing a machine we endeavour to deliver a product which increases the efficiency and rate of your production and make sure it stays that way. All Our machines are fully automotive, extremely reliable, cost-effective, high-speed and convenient to maintain.

Seal The Freshness Within

Highly efficient components, at the heart of every performance sealers that seal the purity & freshness within the product.



Rotary Sealer



STRENGTH

QUALITY

DURABILITY

PERFORMANCE

 MAINTENANCE





Maintenance

Our job is not completed after your new packaging machine has been installed.

A Raj engineers understands the importance of supporting our customers and the packaging solutions. We provide best services in order to establish long term commercial relationships with our clients, we provide:

-  **24 x 7 Service**
-  **On Site Servicing of Parts & Machine**
-  **Instant Machine Repairing & Part Replacment**
-  **Instruction & Guide to Replace Parts**
-  **Providing Trained Machine Operators**
-  **Providing Training to Operate Machines**
-  **On Call Machine Servicing Guide**
-  **All Spare Parts of All Machines Provided in All Sizes**

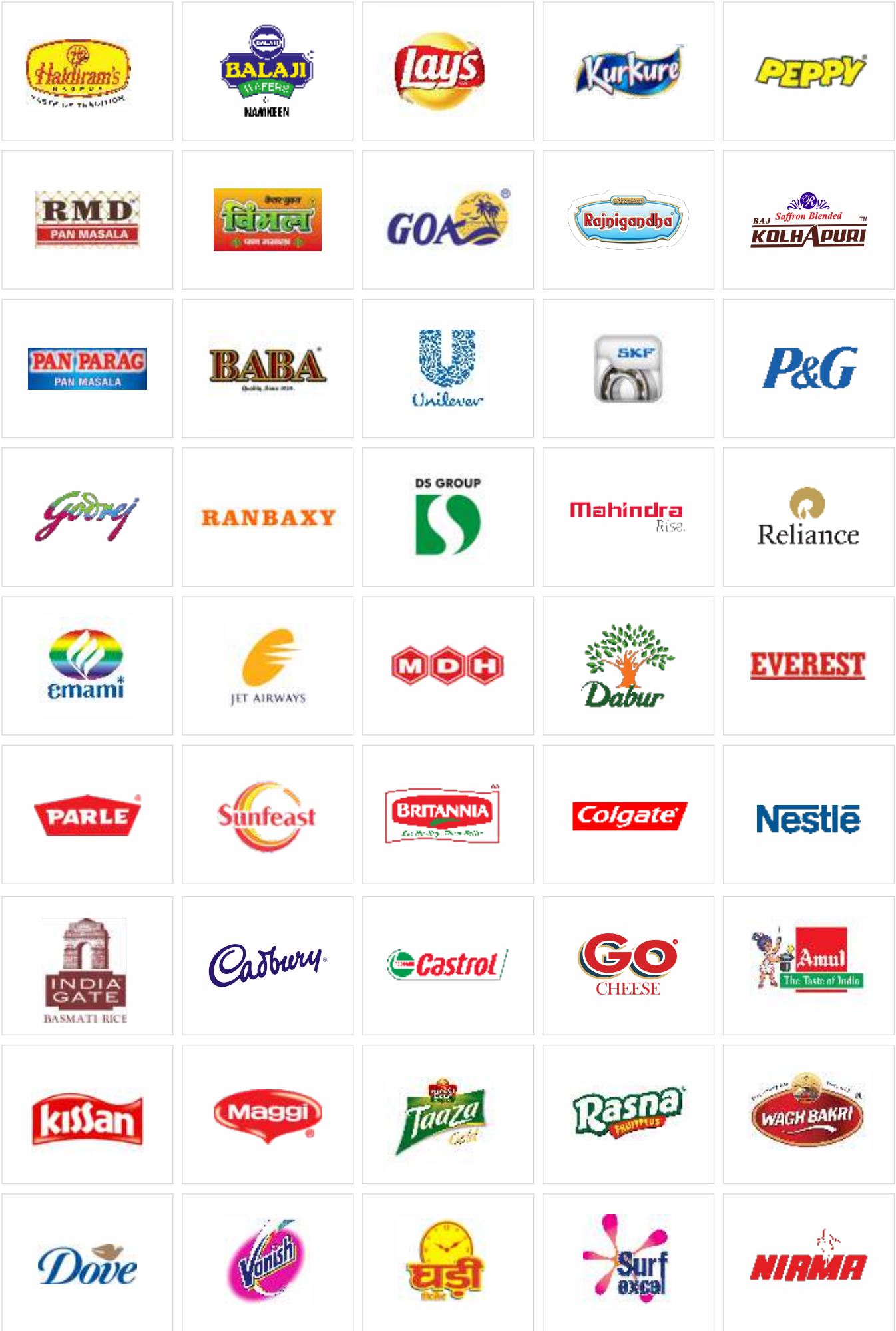
Our company maintains a well-monitored distribution network with worldwide online connectivity and technical support to satisfy any customer's query or urgency 24x7.



OUR CLIENTS

Brands that trust our competencies

Our clients define our stature. They are the reason we exist.
We prefer working with the best of the best,
delivering highest degree of quality and satisfaction to them in the process.



& many more...

Head Office Add. :

109, Ganatra Industrial Estate,
Next to Punjania Industrial Estate,
Pokharan Road No. 1, Khopat,
Thane (W) : 400 601 (Maharashtra).

☎ 022 2547 0370

✉ rajengineers111@yahoo.com

🌐 rajengineers109.com

QUALITY FIRST

